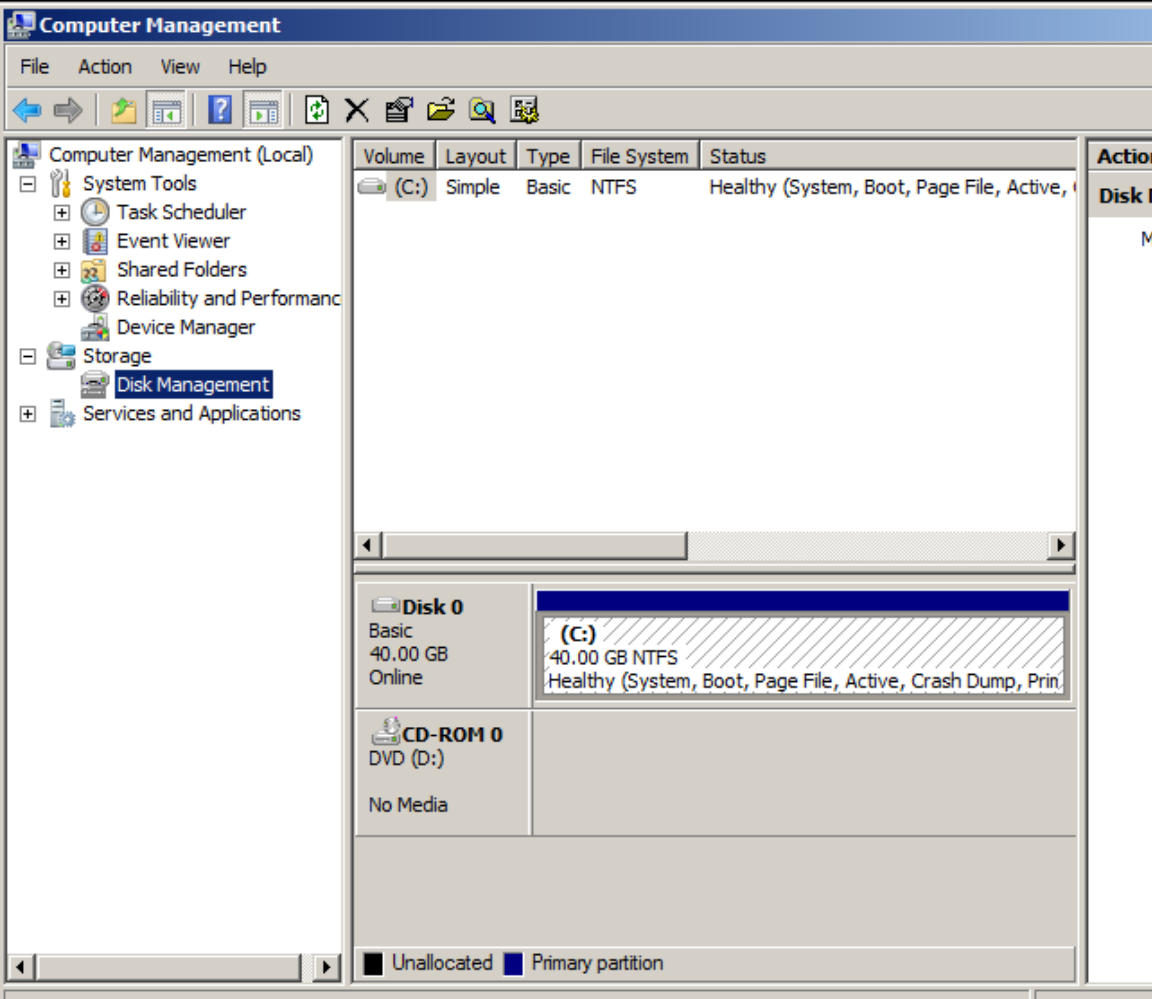


CET 753
Lab Completion Sheet
Chapter 7

Name _____

| # | Page | Chapter/Activity | Status | Description |
|----|------|------------------|--------|------------------------------|
| 44 | 269 | 7-1 | | Viewing the Active Partition |

| Screen Shot(s) | Documentation |
|---|---------------|
|  | |

| # | Page | Chapter/Activity | Status | Description |
|----|------|------------------|--------|---|
| 45 | 270 | 7-2 | | Customize the MMC to Access Disk Management Tools |

| Screen Shot(s) | Documentati |
|----------------|-------------|
|----------------|-------------|

Add or Remove Snap-ins

You can select snap-ins for this console from those available on your computer and configure the selected set of snap-ins. For extensible snap-ins, you can configure which extensions are enabled.

Available snap-ins:

| Snap-in | Vendor |
|--------------------------|------------------|
| Active Directory Do... | Microsoft Cor... |
| Active Directory Site... | Microsoft Cor... |
| Active Directory Use... | Microsoft Cor... |
| ActiveX Control | Microsoft Cor... |
| ADSI Edit | Microsoft Cor... |
| Authorization Manager | Microsoft Cor... |
| Certificates | Microsoft Cor... |
| Component Services | Microsoft Cor... |
| Computer Managem... | Microsoft Cor... |
| Device Manager | Microsoft Cor... |
| DFS Management | Microsoft Cor... |
| Disk Management | Microsoft and... |
| DNS | Microsoft Cor... |
| Event Viewer | Microsoft Cor... |

Add >

Selected snap-ins:

| |
|------------------------|
| Console Root |
| Disk Management(Local) |

Edit Extensions...

Remove

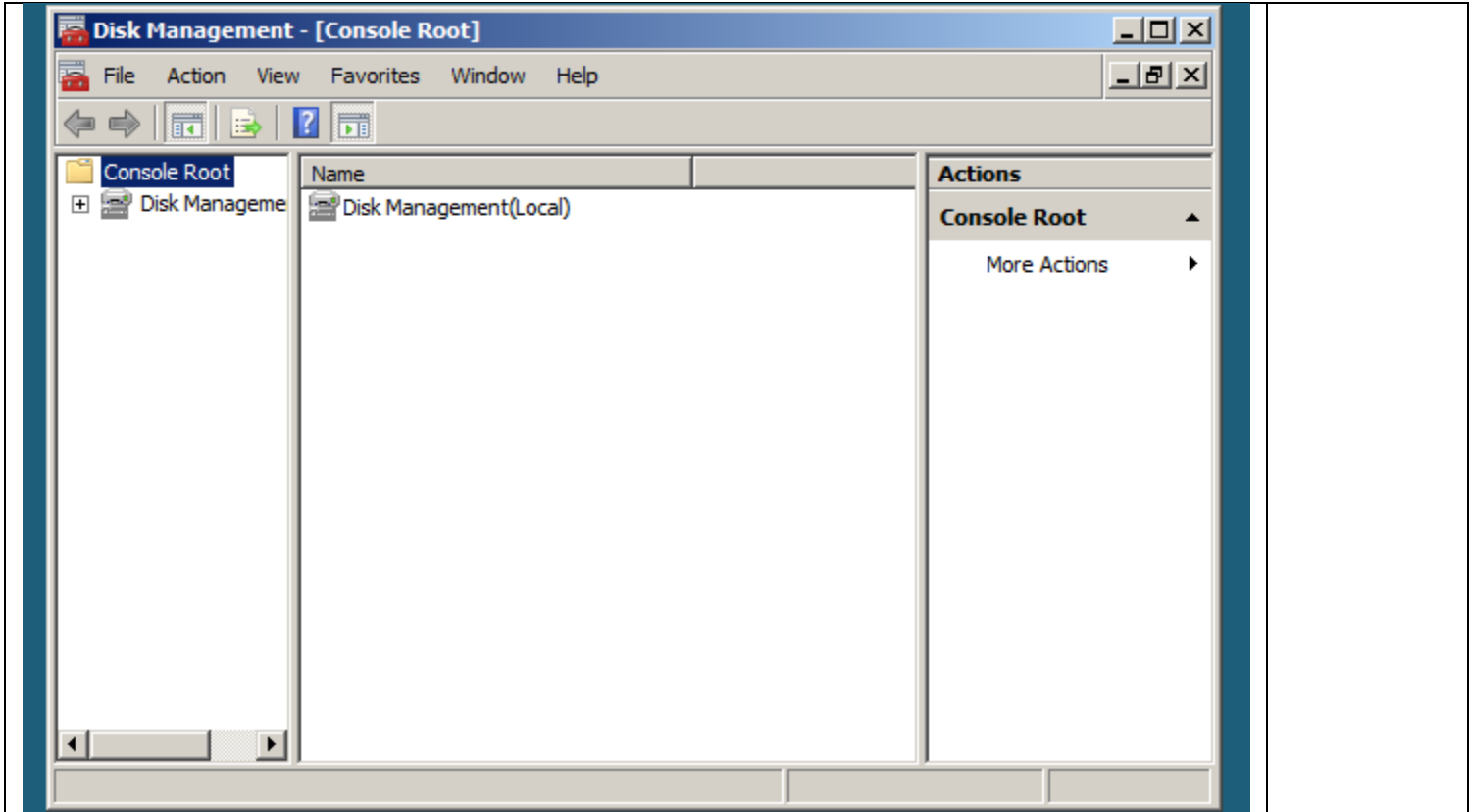
Move Up

Move Down

Advanced...

Description:

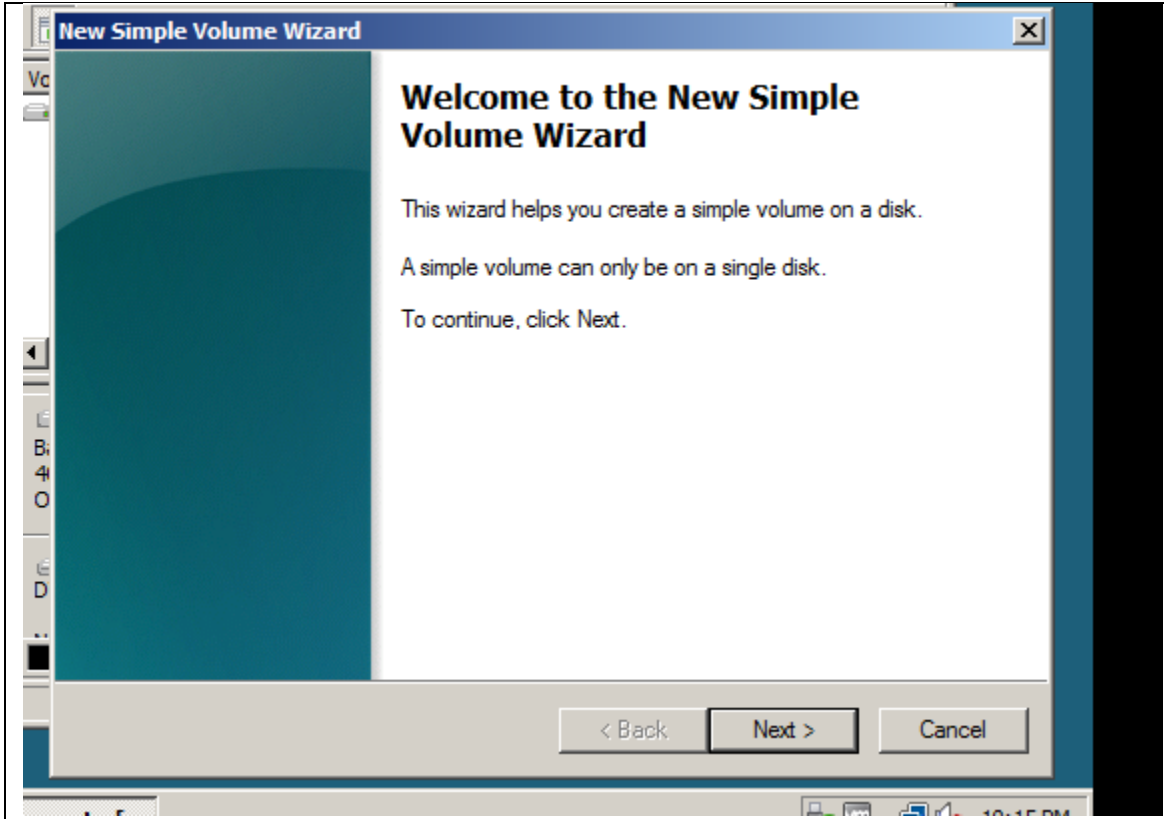
Dynamic disk and volume management provided to Microsoft by VERITAS Software Corporation.

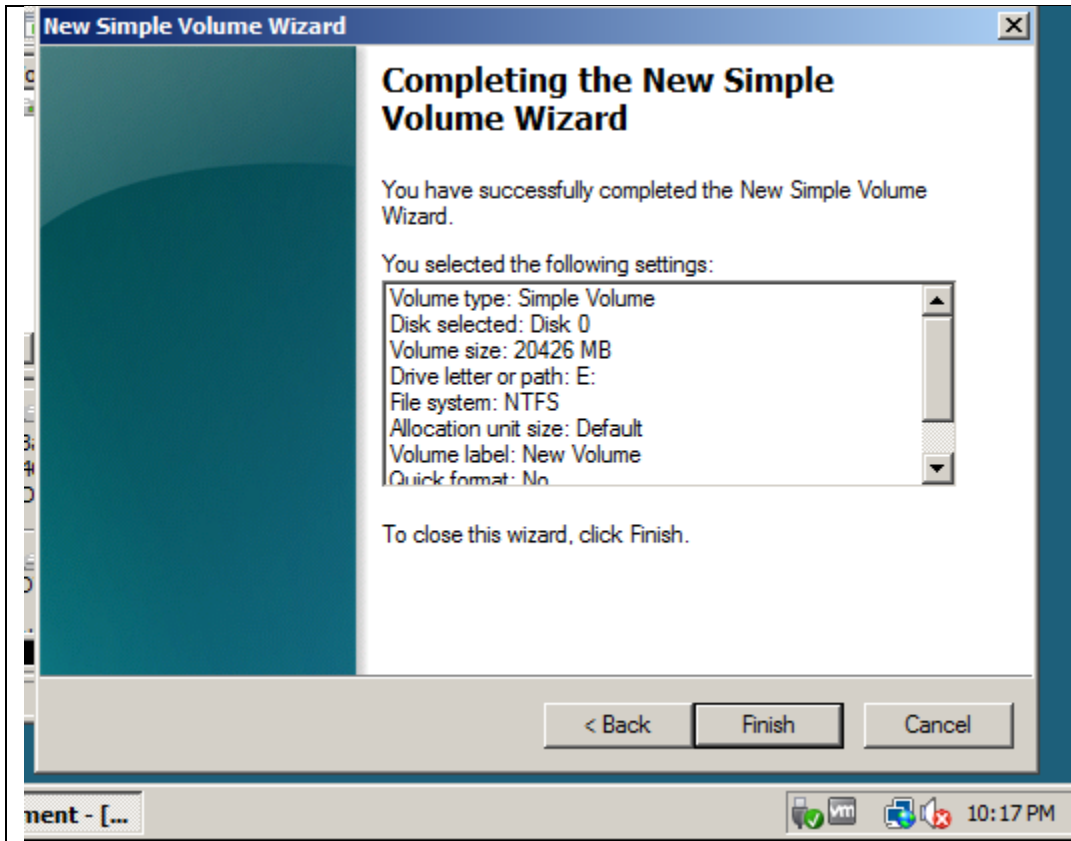


| # | Page | Chapter/Activity | Status | Description |
|----|------|------------------|--------|--------------------------|
| 46 | 274 | 7-3 | | Creating a Simple Volume |

Special Note: Prior to completing this you will need to first right click on your C:\ volume and first choose to shrink it. Simply select the defaults and it will then after a short wait provide unallocated space for you to create your simple volume within.

| Screen Shot(s) | Documentation |
|--|---------------|
| <p>A screenshot of the "Shrink C:" dialog box. It contains the following fields and values:</p> <ul style="list-style-type: none"> Total size before shrink in MB: 40958 Size of available shrink space in MB: 20427 Enter the amount of space to shrink in MB: 20427 Total size after shrink in MB: 20531 <p>Below the fields is a note: "Size of available shrink space can be restricted if snapshots or pagefiles are enabled on the volume." At the bottom are "Shrink" and "Cancel" buttons.</p> | |

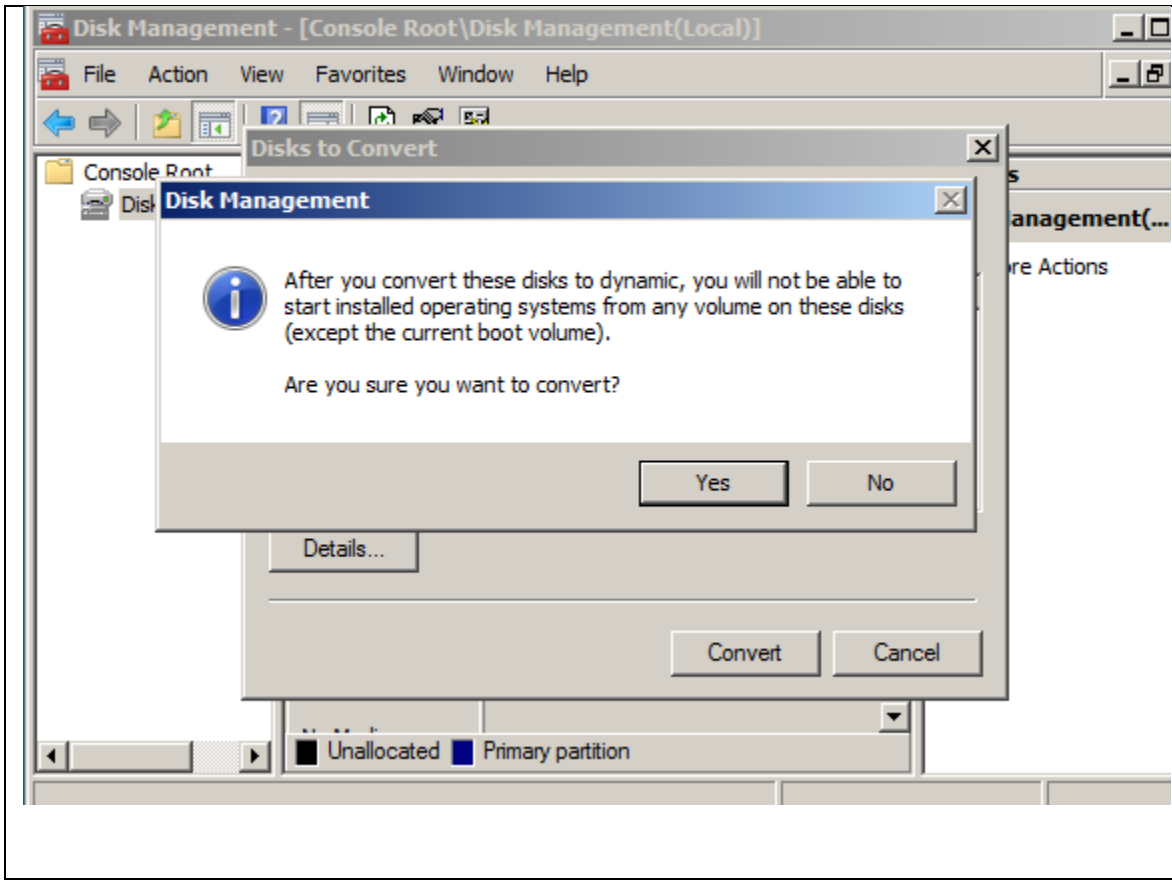


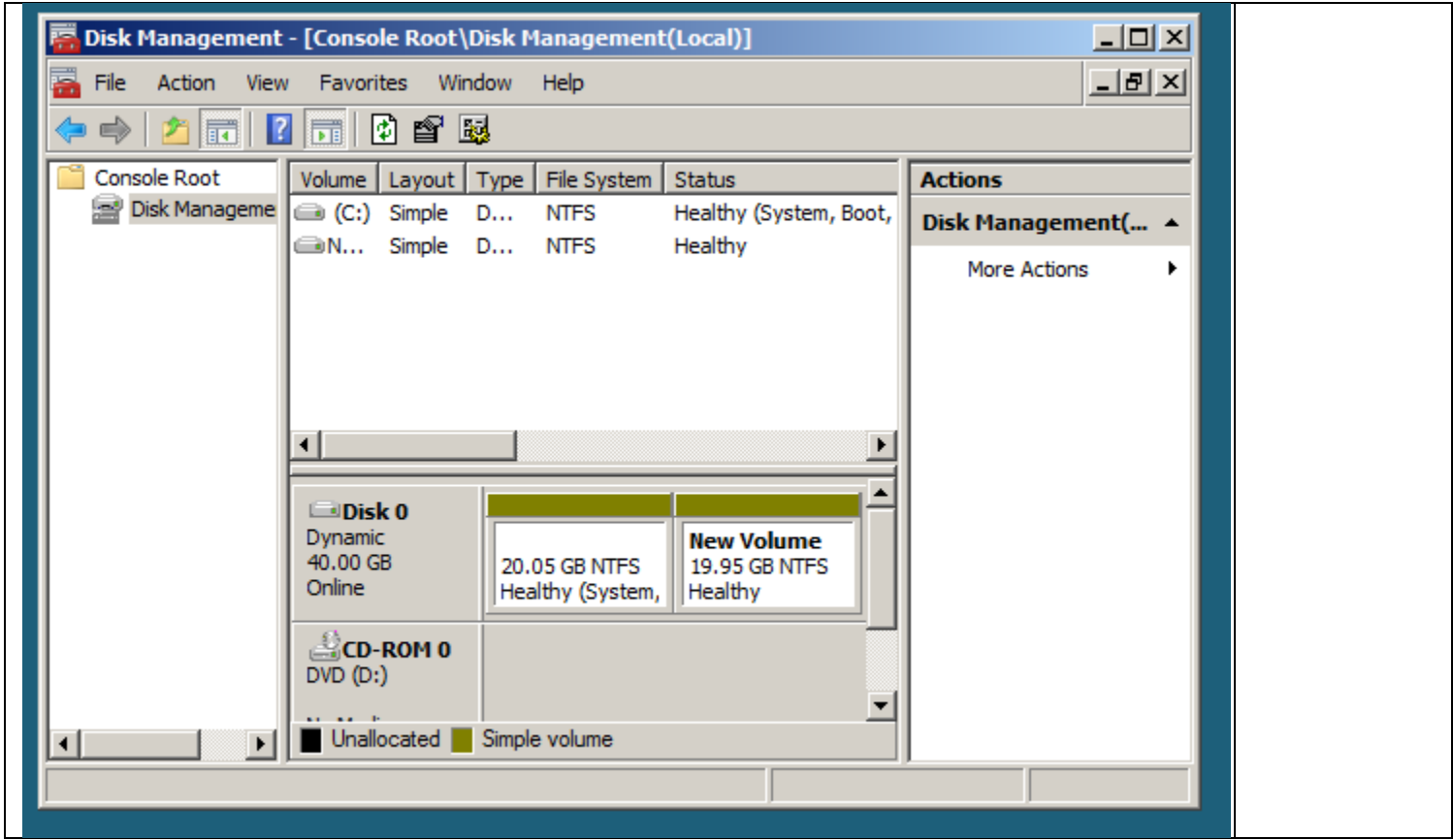


| # | Page | Chapter/Activity | Status | Description |
|----|------|------------------|--------|-------------------------|
| 47 | 276 | 7-4 | | Converting a Basic Disk |

Screen Shot(s)

Documentatio
n

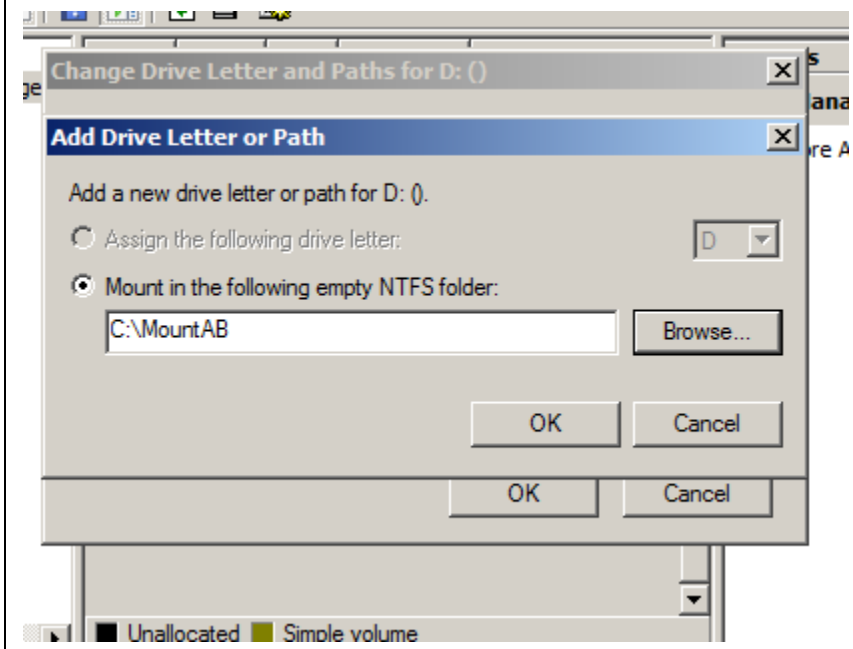
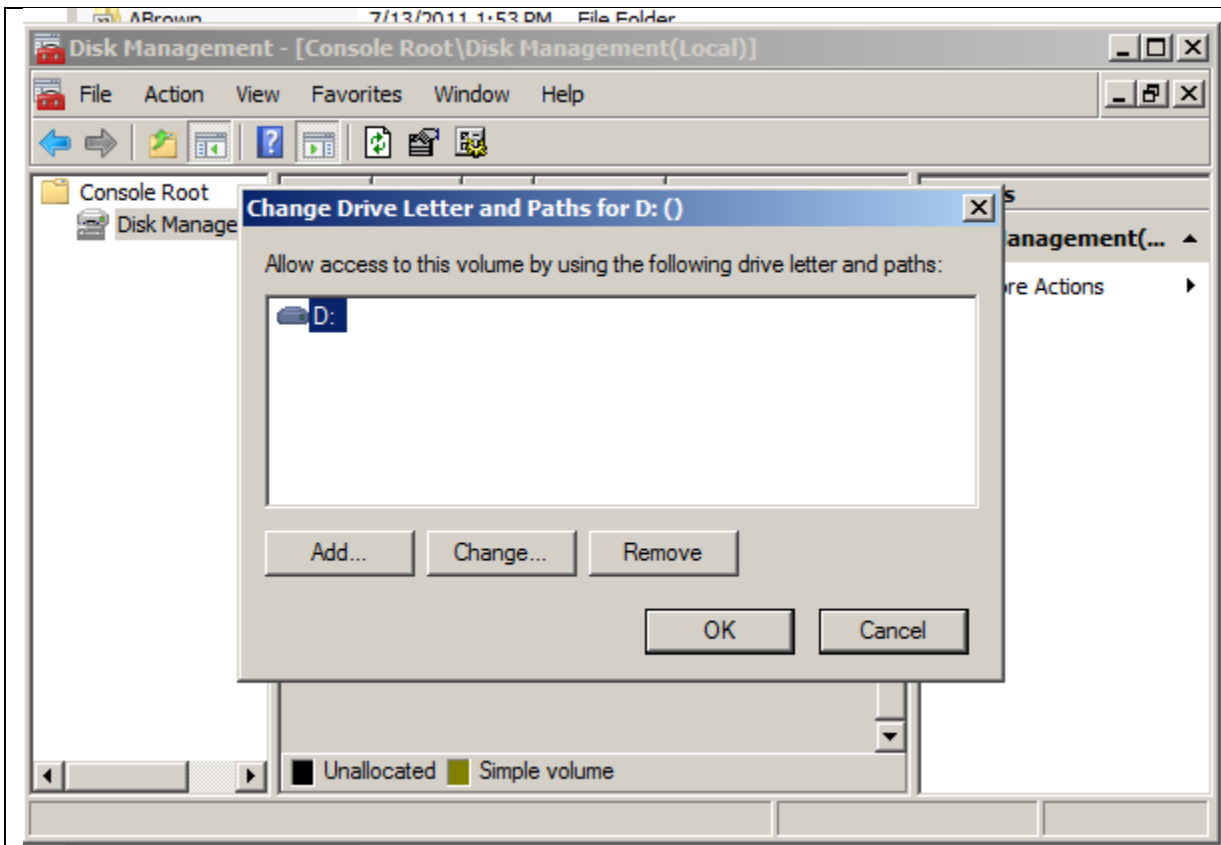


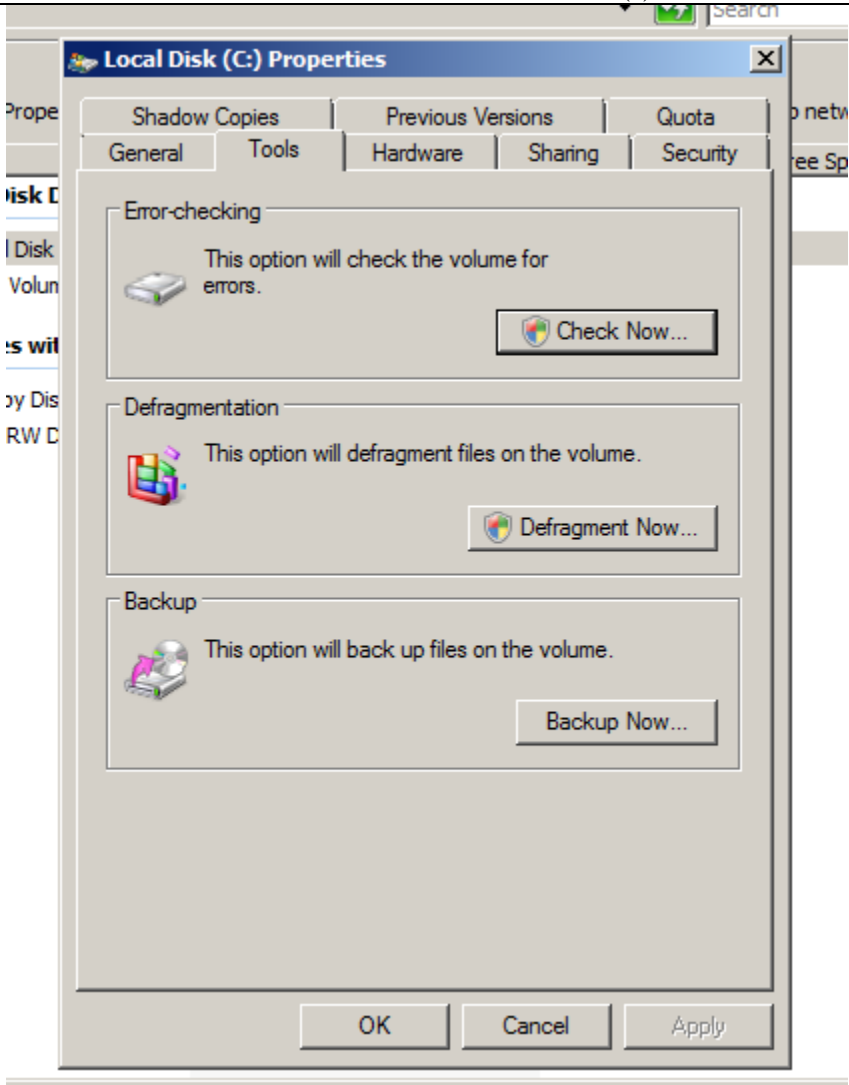


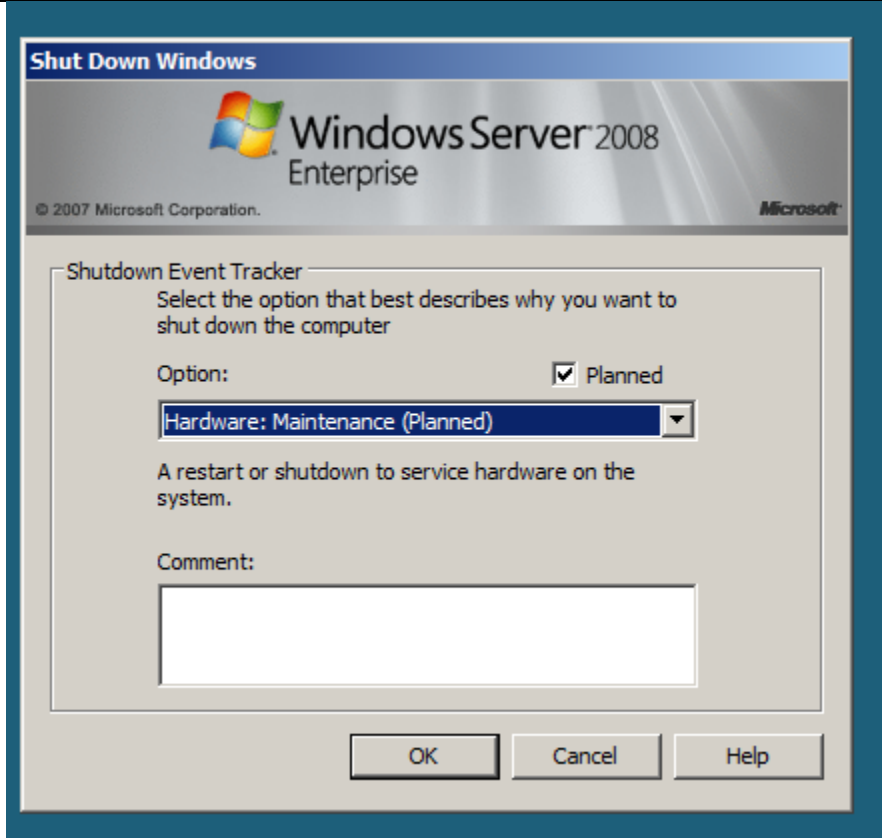
| # | Page | Chapter/Activity | Status | Description |
|----|------|------------------|--------|-----------------------------|
| 48 | 277 | 7-5 | | Configuring a Mounted Drive |

Special Note: You will stop at Step 9 as you do not have drive to mount

| | |
|----------------|---------------|
| Screen Shot(s) | Documentation |
|----------------|---------------|



| Screen Shot(s) | Documentation |
|--|---------------|
|  <p>The screenshot shows the 'Local Disk (C:) Properties' dialog box in Windows. The 'Tools' tab is selected, displaying three utility sections: 'Error-checking', 'Defragmentation', and 'Backup'. Each section includes a brief description and a 'Now...' button. The 'Error-checking' section states 'This option will check the volume for errors.' and has a 'Check Now...' button. The 'Defragmentation' section states 'This option will defragment files on the volume.' and has a 'Defragment Now...' button. The 'Backup' section states 'This option will back up files on the volume.' and has a 'Backup Now...' button. At the bottom of the dialog are 'OK', 'Cancel', and 'Apply' buttons. The background shows a portion of the Windows Explorer window with the 'Local Disk (C:)' selected.</p> | |



```
Checking file system on C:
The type of the file system is NTFS.

A disk check has been scheduled.
windows will now check the disk.

CHKDSK is verifying files (stage 1 of 5)...
 61632 file records processed.
File verification completed.
 13 large file records processed.
 0 bad file records processed.
 0 EA records processed.
 48 reparse records processed.
CHKDSK is verifying indexes (stage 2 of 5)...
15 percent complete. (51908 of 84726 index entries processed)
```

| # | Page | Chapter/Activity | Status | Description |
|----|------|------------------|--------|------------------------------------|
| 50 | 281 | 7-8 | | Using chkdsk from the Command Line |

Get an overview of the status of this server, perform top management tasks, and add or remove server

```

Administrator: Command Prompt
84726 index entries processed.
Index verification completed.
0 unindexed files processed.
CHKDSK is verifying security descriptors (stage 3 of 3)...
61632 security descriptors processed.
Security descriptor verification completed.
11548 data files processed.
CHKDSK is verifying Usn Journal...
29840136 USN bytes processed.
Usn Journal verification completed.
Windows has checked the file system and found no problems.

21023739 KB total disk space.
11230896 KB in 49995 files.
 31144 KB in 11549 indexes.
   0 KB in bad sectors.
158423 KB in use by the system.
 65536 KB occupied by the log file.
9603276 KB available on disk.

 4096 bytes in each allocation unit.
5255934 total allocation units on disk.
2400819 allocation units available on disk.

C:\Users\Administrator>
    
```

Security Information

[Go to Windows Firewall](#)

| # | Page | Chapter/Activity | Status | Description |
|----|------|------------------|--------|---------------------|
| 51 | 291 | 7-10 | | Backing Up a Server |



Select backup configuration

Backup options

Select backup configur...

Specify destination type

Specify advanced option

Confirmation

Backup progress

What type of configuration do you want to schedule?

Full server (recommended)

I want to back up all my server data, applications, and system state.

Backup size: 11.52 GB

Custom

I want to exclude some volumes from this backup.

[Backing up only the system state of the server using the command line](#)

< Previous

Next >

Backup

Cancel



Specify advanced option

Backup options

Select backup configuration...

Select backup destination type

Select backup destination

Specify advanced option

Confirmation

Backup progress

Choose what type of Volume Shadow Copy Service (VSS) backup you want to create.

VSS copy backup (recommended)

Choose this option if you are using another backup product to back up applications that are on Volumes included in the current backup. This option retains the application log files.

VSS full backup

Choose this option if you are not using any other backup product to back up your applications. This option updates each file's backup history and clears the application log files.

[More about backup types and VSS](#)

< Previous

Next >

Backup

Cancel